

AUCKLAND INTERNATIONAL AIRPORT

AKL

W15 Season Start Report (International Traffic)

Key Statistics	W14 Operated	W15 -Season Start	Percentage Change
Air Transport Movements	19,865	21,358	▲ 7.5%
Total Seats	4,683,049	5,126,185	▲ 9.5%
Seats per Passenger ATM	236	240	

Contents

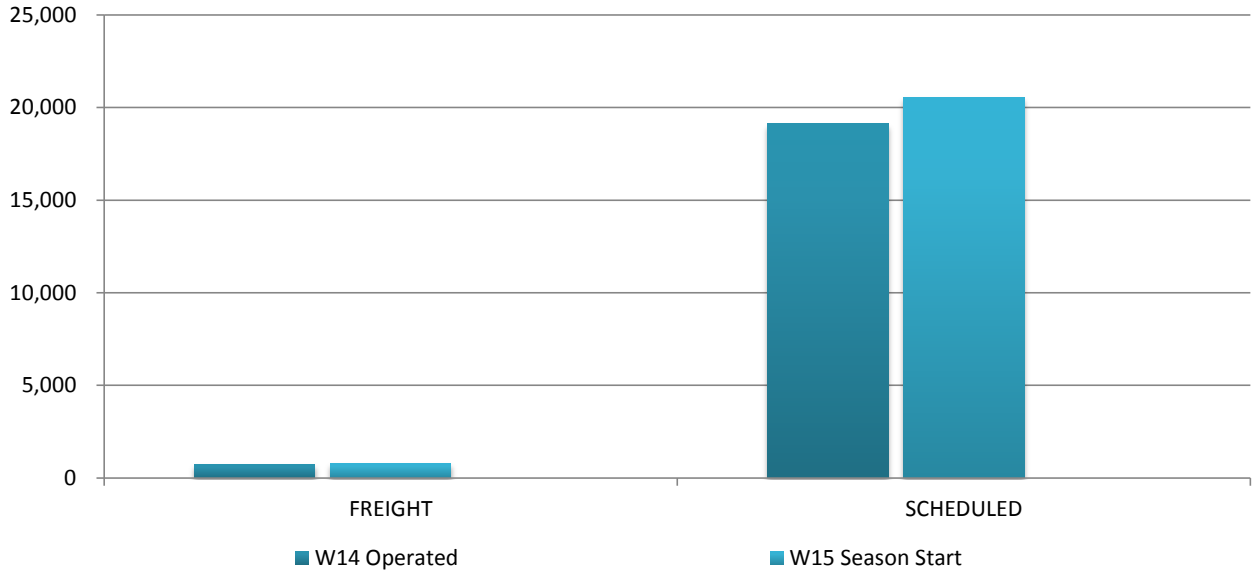
	Page
Movements and Seats by Service Type	2
Week Departure Frequencies by Carrier	3-5
Top 10 Airlines by ATM's and Seats	6
Top 20 Destinations by ATM's and Seats	7
International Terminal - Passengers per 60 Minutes	8-9
International Arrivals - Passengers per 30 Minutes	10
Glossary	11

Data in this report is current as of 17 October 2015

No warranty whether expressed or implied as to the completeness, accuracy, fitness for purpose, or satisfactory quality is given by ACL regarding the information in this report, which is provided by third parties. Accordingly, ACL excludes all liability with regard to such data.

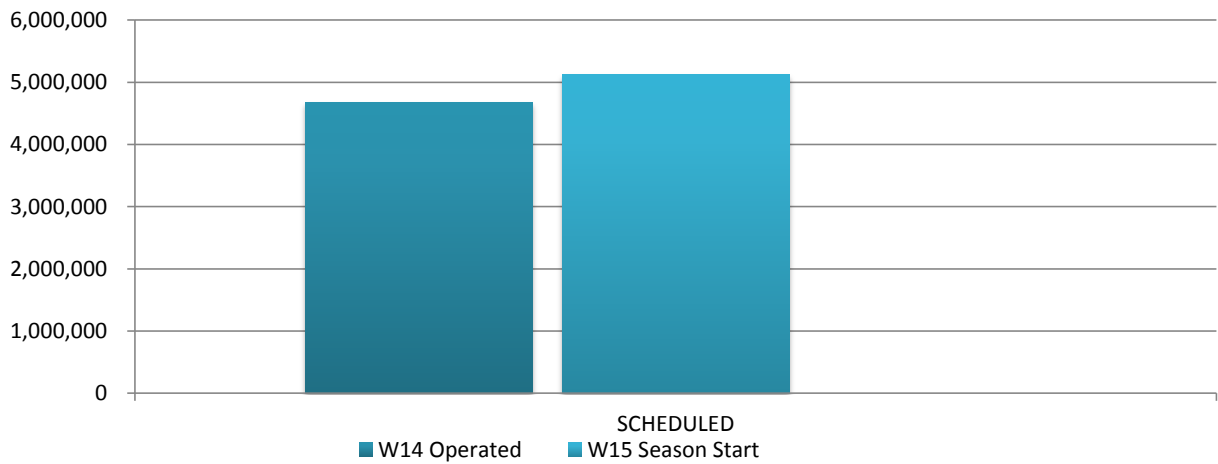
The contents of this report may not be reproduced without the written consent of ACL.

Full Season ATMs by Service Type



	W14 Operated	W15 Season Start	Percentage Change
FREIGHT	740	805	▲ 9%
SCHEDULED	19,125	20,553	▲ 7.5%
TOTAL	19,865	21,358	▲ 7.5%

Full Season Seats by Service Type



	W14 Operated	W15 Season Start	Percentage Change
SCHEDULED	4,683,049	5,126,185	▲ 9.5%
TOTAL	4,683,049	5,126,185	▲ 9.5%

AUCKLAND INTERNATIONAL AIRPORT

WEEK DEPARTURE FREQUENCIES - BY CARRIER

21 to 27 December 2015

	OPERATOR	AIRPORT		W14		W15		SEATS +/-	ATMS +/-
				SEATS	ATMS	SEATS	ATMS		
CA	Air China	PEK	Beijing Capital	0	0	1,659	7	1,659	7
CA Total				0	0	1,659	7	1,659	7
CI	China Airlines	TPE	Taipei Chiang Kai Shek	2,784	8	2,784	8	0	0
CI Total				2,784	8	2,784	8	0	0
CX	Cathay Pacific	HKG	Hong Kong Int'L	3,962	14	4,235	14	273	0
CX Total				3,962	14	4,235	14	273	0
CZ	China Southern Airlines	CAN	Guangzhou Baiyun	3,759	14	3,682	14	-77	0
CZ Total				3,759	14	3,682	14	-77	0
EK	Emirates	DXB	Dubai	10,269	21	10,269	21	0	0
EK Total				10,269	21	10,269	21	0	0
FJ	Air Pacific	NAN	Nadi International	1,880	11	1,822	12	-58	1
		SUV	Nausori International Airport	240	2	240	2	0	0
FJ Total				2,120	13	2,062	14	-58	1
FX	Fedex	CAN	Guangzhou Baiyun	0	0	0	1	0	1
		SYD	Sydney Kingsford Smith	0	1	0	0	0	-1
FX Total				0	1	0	1	0	0
HA	Hawaiian Airlines	HNL	Honolulu International	882	3	882	3	0	0
HA Total				882	3	882	3	0	0
HJ	Tasman Pacific (DHL)	SYD	Sydney Kingsford Smith	0	3	0	5	0	2
HJ Total				0	3	0	5	0	2
JQ	Jetstar	MEL	Melbourne	2,880	16	2,855	15	-25	-1
		OOL	Gold Coast Coolangatta	1,440	8	1,440	8	0	0
		SYD	Sydney Kingsford Smith	1,980	11	2,135	11	155	0
JQ Total				6,300	35	6,430	34	130	-1
KE	Korean Air	ICN	Seoul Incheon Intl	2,555	7	2,846	8	291	1
KE Total				2,555	7	2,846	8	291	1
LA	Lan Airlines	SCL	Santiago Arturo Merino Benitez	1,820	7	2,191	7	371	0
		SYD	Sydney Kingsford Smith	1,820	7	2,191	7	371	0
LA Total				3,640	14	4,382	14	742	0
MH	Malaysia Airlines	KUL	Kuala Lumpur Int'L	1,974	7	1,981	7	7	0
MH Total				1,974	7	1,981	7	7	0
MU	China Eastern Airlines	PVG	Shanghai Pu Dong	1,048	4	1,048	4	0	0

AUCKLAND INTERNATIONAL AIRPORT

WEEK DEPARTURE FREQUENCIES - BY CARRIER

21 to 27 December 2015

OPERATOR	AIRPORT	W14		W15		SEATS +/-	ATMS +/-		
		SEATS	ATMS	SEATS	ATMS				
MU Total		1,048	4	1,048	4	0	0		
NF	Air Vanuatu	VL	Vanuatu	340	2	340	2	0	0
NF Total		340	2	340	2	0	0		
NZ	Air New Zealand	ADL	Adelaide	1,176	7	1,176	7	0	0
		APW	Apia Faleolo	1,714	9	1,800	9	86	0
		BNE	Brisbane International	3,670	14	3,902	16	232	2
		EZE	Buenos Aires Ministro Pistarini	0	0	936	3	936	3
		HKG	Hong Kong Int'L	2,128	7	2,184	7	56	0
		HNL	Honolulu International	702	3	936	4	234	1
		IAH	Houston	0	0	1,560	5	1,560	5
		IUE	Niue International Airport	168	1	336	2	168	1
		LAX	Los Angeles International	3,442	11	3,182	10	-260	-1
		LHR	London Heathrow	2,324	7	2,324	7	0	0
		MCY	Sunshine Coast Airport	0	0	504	3	504	3
		MEL	Melbourne	5,152	24	5,642	24	490	0
		NAN	Nadi International	2,160	8	2,470	9	310	1
		NLK	Norfolk Island Airport	168	1	168	1	0	0
		NOU	Noumea	504	3	504	3	0	0
		NRT	Tokyo Narita	2,740	10	3,020	10	280	0
		OOL	Gold Coast Coolangatta	1,344	8	1,344	8	0	0
		PER	Perth	2,114	7	3,110	11	996	4
		PPT	Papeete Faaa	702	3	702	3	0	0
		PVG	Shanghai Pu Dong	2,118	7	2,114	7	-4	0
		RAR	Rarotonga	1,248	5	1,416	5	168	0
		SFO	San Francisco International	3,208	10	2,948	9	-260	-1
		SIN	Singapore Changi	0	0	2,114	7	2,114	7
		SYD	Sydney Kingsford Smith	8,850	36	9,128	36	278	0
		TBU	Nuku'Alofa Fua'Amotu Internationa	1,608	8	1,674	8	66	0
		VL	Vanuatu	168	1	168	1	0	0
		YVR	Vancouver	1,824	6	2,184	7	360	1
NZ Total				49,232	196	57,546	222	8,314	26
PR	Philippine Airlines	CNS	Cairns	0	0	624	4	624	4

AUCKLAND INTERNATIONAL AIRPORT

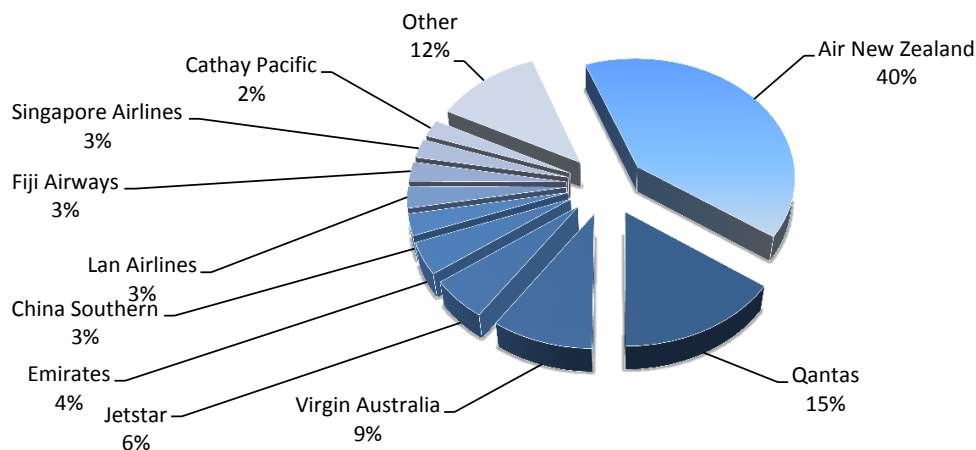
WEEK DEPARTURE FREQUENCIES - BY CARRIER

21 to 27 December 2015

OPERATOR	AIRPORT	W14		W15		SEATS +/-	ATMS +/-
		SEATS	ATMS	SEATS	ATMS		
PR Total		0	0	624	4	624	4
QF	Qantas						
	BNE Brisbane International	2,352	14	2,352	14	0	0
	CNS Cairns	0	1	0	1	0	0
	MEL Melbourne	2,856	17	3,360	20	504	3
	PER Perth	470	2	594	2	124	0
	SYD Sydney Kingsford Smith	6,177	38	5,712	40	-465	2
QF Total		11,855	72	12,018	77	163	5
SB	Aircalin Air Caledonie Int						
	NOU Noumea	608	4	632	4	24	0
SB Total		608	4	632	4	24	0
SQ	Singapore Airlines						
	SIN Singapore Changi	5,292	16	3,087	12	-2,205	-4
SQ Total		5,292	16	3,087	12	-2,205	-4
TG	Thai Airways International Public Lt						
	BKK Bangkok International	1,168	4	1,168	4	0	0
TG Total		1,168	4	1,168	4	0	0
TN	Air Tahiti Nui						
	PPT Papeete Faa	882	3	882	3	0	0
TN Total		882	3	882	3	0	0
VA	Virgin Australia						
	APW Apia Faleolo	1,232	7	1,232	7	0	0
	BNE Brisbane International	2,112	12	2,464	14	352	2
	MEL Melbourne	1,408	8	1,408	8	0	0
	OOL Gold Coast Coolangatta	1,232	7	1,232	7	0	0
	RAR Rarotonga	880	5	880	5	0	0
	SYD Sydney Kingsford Smith	1,232	7	1,408	8	176	1
	TBU Nuku'Alofa Fua'Amotu Internationa	352	2	352	2	0	0
VA Total		8,448	48	8,976	51	528	3

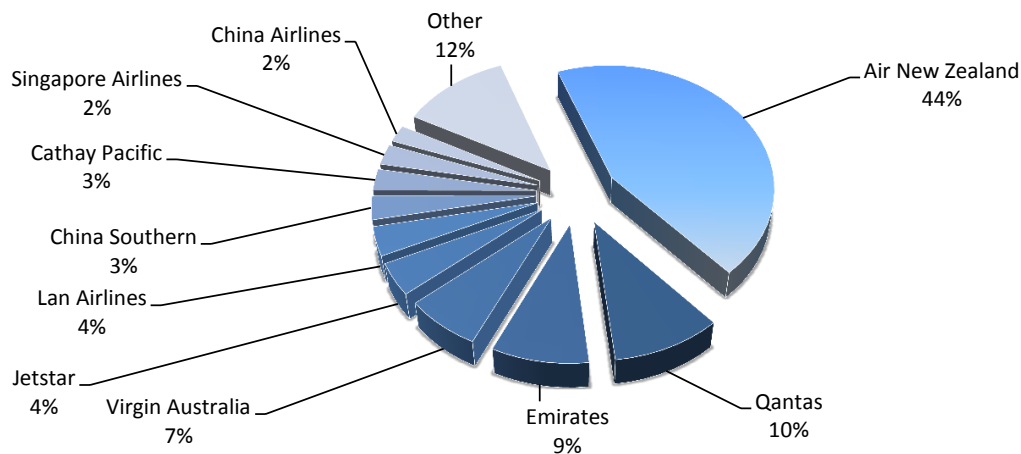
Top 10 Airlines by Air Transport Movements (ATMs)

Airline	Movements
Air New Zealand	8,606
Qantas	3,278
Virgin Australia	2,020
Jetstar	1,166
Emirates	924
China Southern	616
Lan Airlines	616
Fiji Airways	563
Singapore Airlines	546
Cathay Pacific	490
Other	2,533

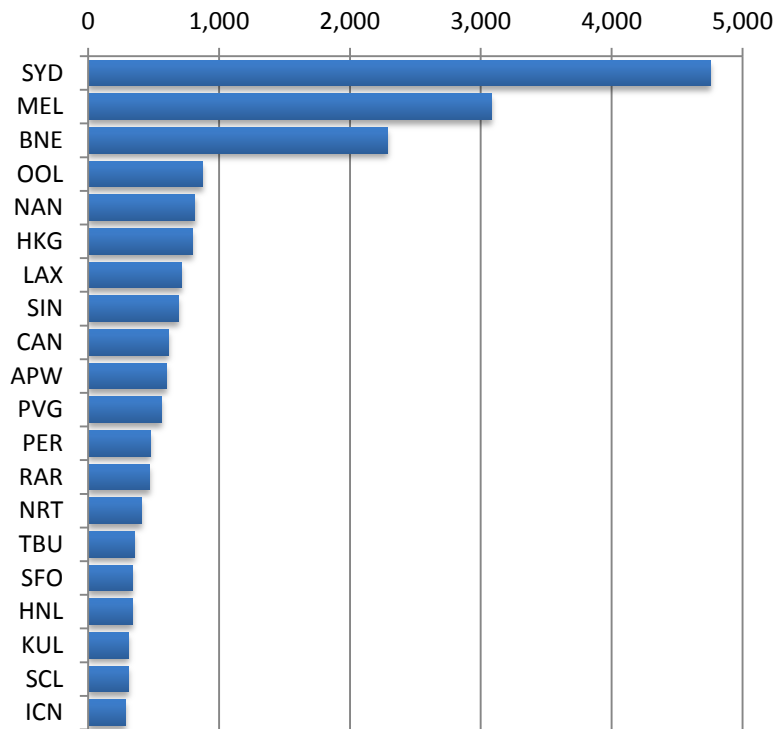


Top 10 Airlines by Air Seats

Airline	Seats
Air New Zealand	2,248,750
Qantas	509,320
Emirates	451,836
Virgin Australia	355,520
Jetstar	215,150
Lan Airlines	192,808
China Southern	157,148
Cathay Pacific	143,500
Singapore Airlines	136,749
China Airlines	113,522
Other	601,882

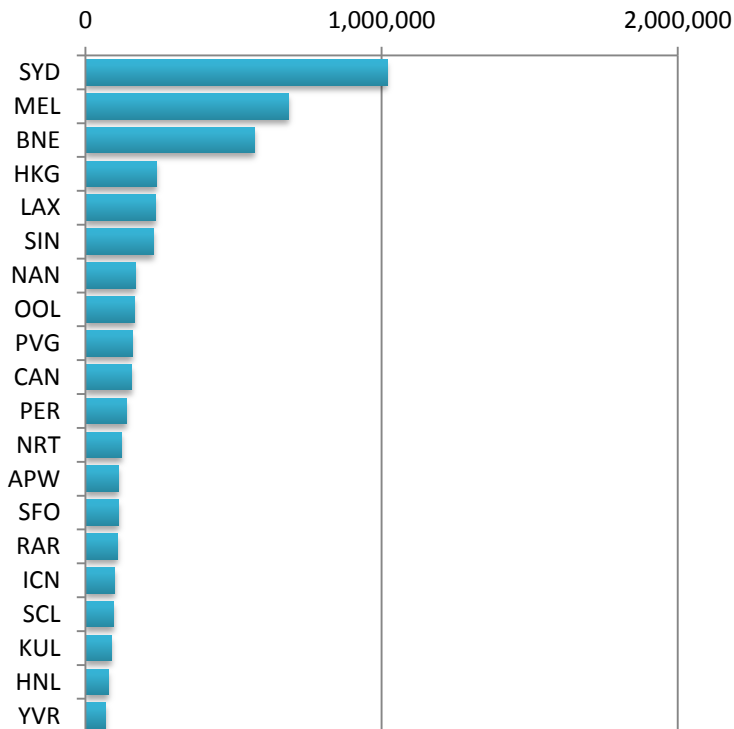


Air Transport Top 20 Movements by Destination



Destination	ATM'S
SYD	4,755
MEL	3,079
BNE	2,287
OOL	877
NAN	816
HKG	798
LAX	716
SIN	690
CAN	616
APW	602
PVG	558
PER	477
RAR	472
NRT	406
TBU	354
SFO	339
HNL	337
KUL	308
SCL	308
ICN	286

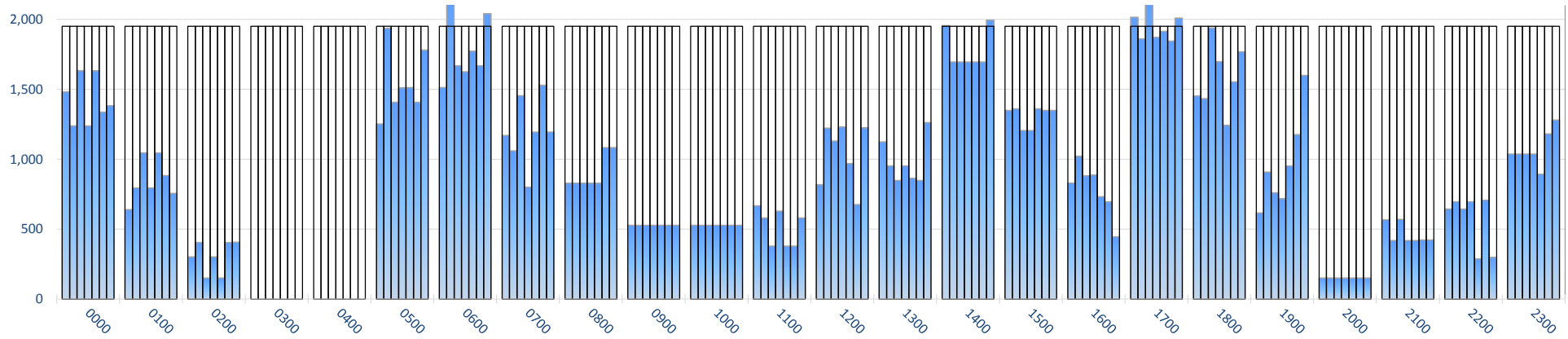
Air Transport Top 20 Seats by Destination



Destination	SEATS
SYD	1,018,766
MEL	684,875
BNE	570,642
HKG	239,596
LAX	235,632
SIN	230,361
NAN	169,472
OOL	164,638
PVG	158,516
CAN	157,148
PER	137,192
NRT	122,612
APW	112,272
SFO	111,908
RAR	108,100
ICN	99,014
SCL	96,404
KUL	87,164
HNL	76,482
YVR	68,016

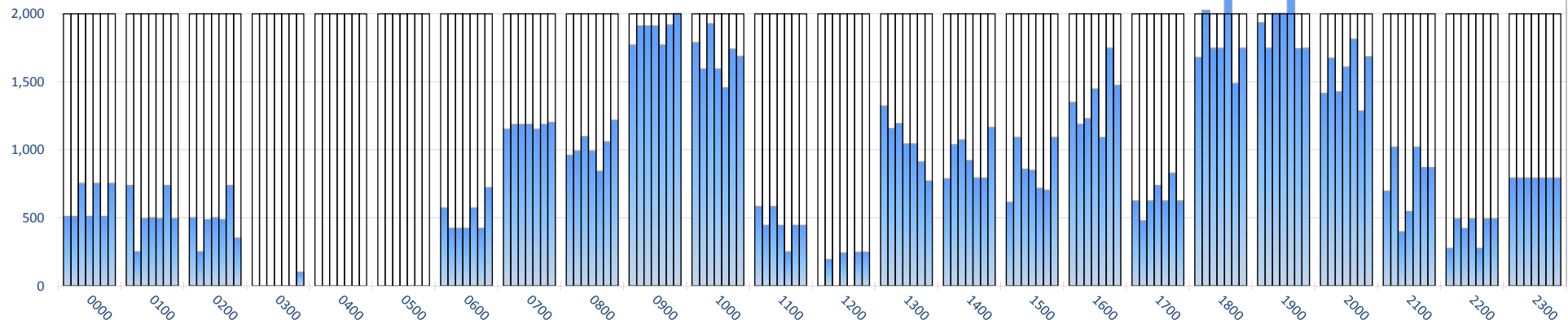
INTERNATIONAL TERMINAL ARRIVALS (PER 60 MINUTES, ROLLING EVERY 5 MINUTES)

Week Movements per Hour - All times LOCAL



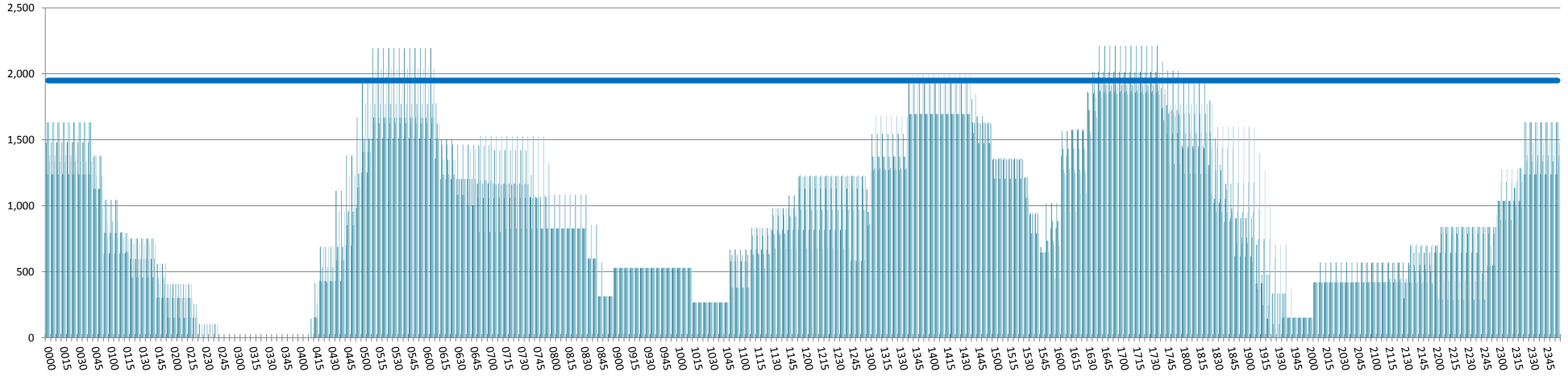
INTERNATIONAL TERMINAL DEPARTURES (PER 60 MINUTES, ROLLING EVERY 5 MINUTES)

Week Movements per Hour - All times LOCAL



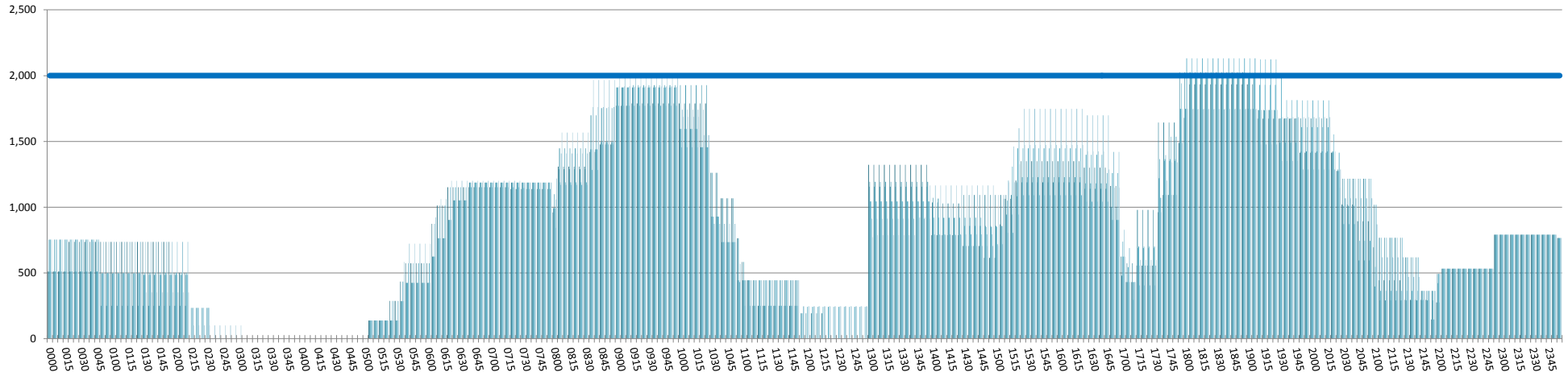
INTERNATIONAL TERMINAL ARRIVALS (PER 60 MINUTES, ROLLING EVERY 5 MINUTES)

Week Movements per Hour - All times LOCAL



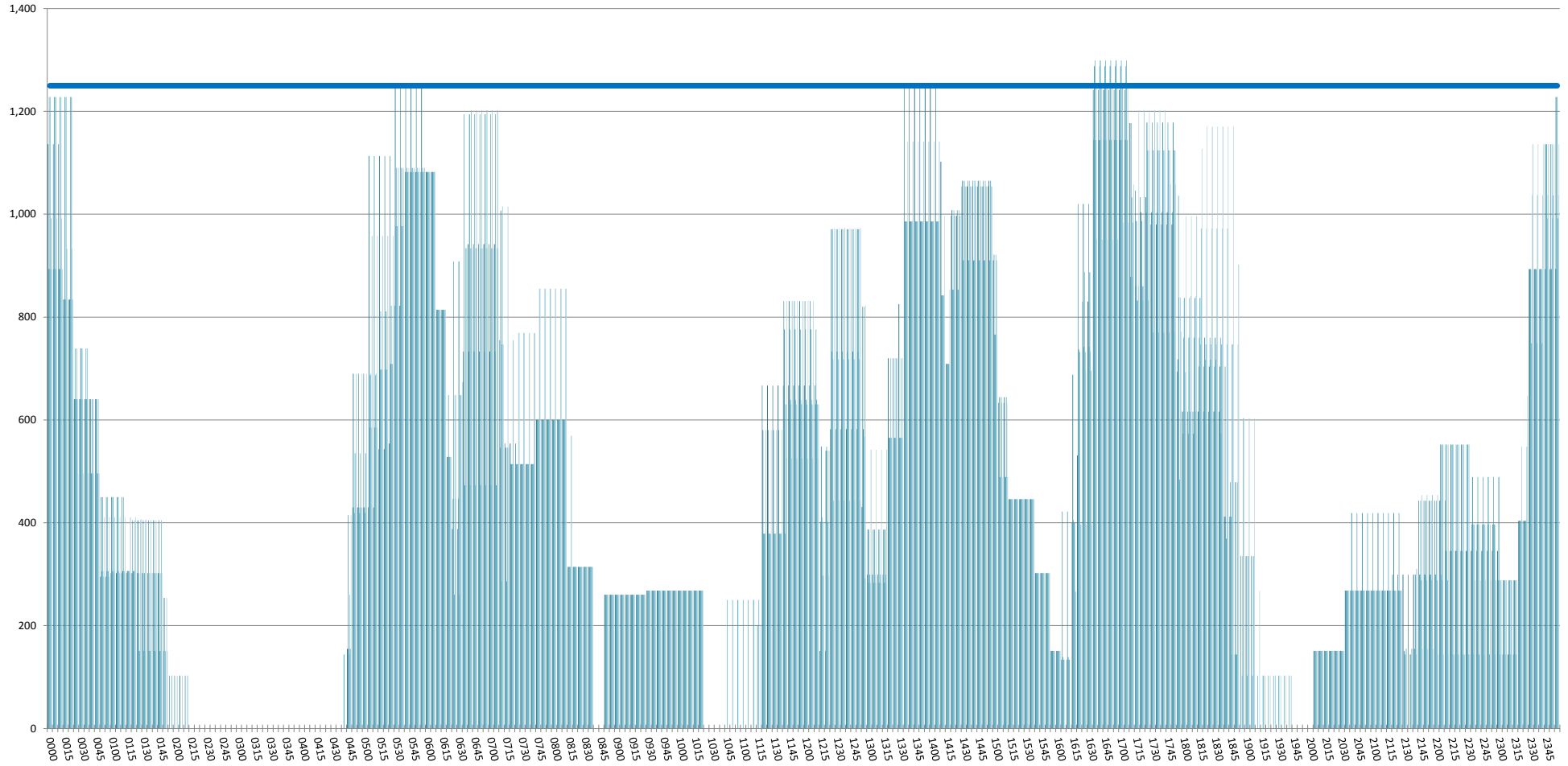
INTERNATIONAL TERMINAL DEPARTURES (PER 60 MINUTES, ROLLING EVERY 5 MINUTES)

Week Movements per Hour - All times LOCAL



INTERNATIONAL TERMINAL ARRIVALS (PER 30 MINUTES, ROLLING EVERY 5 MINUTES)

Week Movements - All times LOCAL



GLOSSARY OF TERMS

Air Transport Movement (ATM)	A scheduled or charter passenger or freight aircraft movement.
Allocation	The allocation of slots such that demand is constrained to fit within declared scheduling limits.
Common Travel Area (CTA)	Services to or from the Republic of Ireland and the Channel Islands.
Demand	The unconstrained demand for slots, prior to any schedule adjustments.
Passenger ATM	A scheduled or charter <u>passenger</u> aircraft movement (ie, excluding all-cargo aircraft movements).
Scheduling Limits	Limiting parameters declared by the Airport Operator used in the coordination process.
Seats	The number of seats based on the aircraft configuration advised by the airline.
Average Week	Week for W15 is 21-27 Dec 2015
Data Snapshot	All data used for this report was as held 17 October 2015

GUIDE TO HISTOGRAMS

The histograms show the pattern of traffic by time of day against the appropriate scheduling limit. Each time period consist of seven columns representing the days-of-week, Monday through Sunday.